

The *102PC-SE* is a Legacy Serial to Ethernet Industrial Protocol Converter. It is housed in a ruggedized DIN-Rail enclosure, and is designed for use in industrial and remote monitoring, data collection, diagnostics, and numerous other applications.

PRODUCT FEATURES

- Compact Size, Smaller Footprint
- One RJ-45 10/100BaseTX Copper Port
- One Male DB9 Serial Port w/DCE device
- Provides Remote Monitoring, Control and Configuration of any Serial Device
- Full SNMP and Web Browsing Management
- 256 Frame Buffer for Ethernet Bridging
- Hardened ESD Protection Diodes on TX Port
- Surge Protection Diodes on Power Inputs
- Redundant Power Inputs (10-30 VDC)
- Extended Environmental Specifications
- LED Link/Activity Status Indication
- Rugged Industrial DIN-RAIL Enclosure
- Serial and RJ-45 Ports Support Full or Half Duplex Operation

PRODUCT OVERVIEW

The *N-TRON™ 102PC-SE* Serial to Ethernet Industrial Protocol Converter is designed to mount legacy serial devices to your LAN thus providing you remote monitoring, control and configuration of the serial device, not to mention greater flexibility of connectivity and cabling.

The *102PC-SE* provides one male DB9 serial interface COM port with a DCE device, and one RJ-45 10/100BaseTX port. The serial interface is full duplex capable supporting speeds up to 115.2Kbps, and the RJ-45 port is full/half duplex capable, using "state of the art" Ethernet switching technology. The *102PC-SE* auto-negotiates the speed and flow control capabilities of the TX copper port connection, and configures itself automatically. For added security, ESD protection diodes are standard on the RJ-45 port. The *102PC-SE* also supports straight-through or cross-over cable via the internal jumper.

Offering flexible configuration, the *102PC-SE* can be setup on-site via the serial port, or remotely using web management.



Web management allows the user to remotely log on and configure the converter using a web browser. SNMP is also available for switch link and status monitoring.

The *102PC-SE* provides a 256 frame buffer for Ethernet bridging and the high performance processor runs ARP, DHCP client, ICMP, IP, TCP, Telnet, TFTP, HTTP server, SMTP client, POP3 client, and PPP compression.

The *102PC-SE* automatically learns and stores up to 10,000 MAC addresses, thus enabling this product to support extremely sophisticated and complex network architectures.

With an operating temperature of 0° to 70°C, and a MTBF greater than 2M hours, the *102PC-SE* has extended operating specifications to meet the harsh needs of the industrial environment. For cost savings and convenience the protocol converter can be DIN-Rail, or panel mounted alongside Ethernet I/O or other Industrial Equipment. The unique compact size provides a smaller footprint, conserving space in the most critical dimension.

To increase reliability, the *102PC-SE* contains surge protection and redundant power inputs of 10-30VDC. LED's are provided to display the link status and activity of each port, as well as power on/off status.

BENEFITS

Industrial Media Converter

- Compact Size, Smaller Footprint
- Converts Legacy Serial to LAN
- Provides greater flexibility for connectivity and cabling
- ESD Protection Diodes on RJ-45 Port
- Surge Protection Diodes on Power Inputs
- High Reliability/Availability
- Extended Environmental Specifications
- Ruggedized DIN-Rail Enclosure
- High Performance
- High MTBF >2M Hours (measured)

Ease of Use

- Provides On-site or Remote Monitoring, Control, and Configuration
- Redundant Power Inputs
- Supports Straight-through or Cross-over Cable via Jumper
- LED Link/Activity Status Indication
- Compact DIN-Rail Package with Optional Panel mount kit

SPECIFICATIONS

Physical

Height:	3.98" (10.11cm)
Width:	2.01" (5.10 cm)
Depth:	3.91" (9.931 cm)
Weight:	0.75 lbs. (0.3 kg)

Electrical

Input Voltage:	10-30 VDC
Steady Input Current:	100mA @24V
Inrush:	7.0Amp/0.5ms@24V

Environmental

Operating Temperature:	0°C to 70°C
Storage Temperature:	-40°C to 85°C
Operating Humidity:	20% to 95% (Non Condensing)
Operating Altitude:	0 to 10,000 ft.

Shock and Vibration (bulkhead mounting)

Shock:	200g @ 10ms
Vibration/Seismic:	50g, 5-200Hz, Triaxial

Network Media

10BaseT:	>Cat3 Cable
100BaseTX:	>Cat5 Cable

Connectors

10/100BaseTX:	One (1) RJ-45 TX Copper Port
Serial:	One (1) DB9 (9-pin male sub D) Port with a RS-232 DCE device
COM Parameters:	2400, 4800, 9600, 19.2K, 38.4K, 57.6K 115.2K

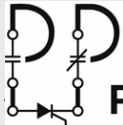
Recommended Wiring Clearance:

Front:	2" (5.08 cm)
Top:	3" (7.62 cm)

Emissions and Safety Approvals:

FCC Part 15 Class A

Contact Information



PACIFIC PARTS & CONTROLS, INC.

6255 PRESCOTT COURT • CHINO, CA 91710
909-465-1174 • FAX 909-465-1178
www.pacificparts.com

Electrical Supply Distributor

Ordering Information

102PC-SE	RJ-45 10/100BaseTX
300PM	Panel Mount kit
NTPS-24-1.3	DIN-Rail Power Supply 24V@1.3 Amp