

The 100-POE4 Industrial PoE Mid-Span Injector is designed to transmit power, along with data, over an Ethernet network and is ideal for PoE capable devices where running an AC power feed is either not possible or cost effective. This feature allows an end user to power a PoE camera, wireless access point, or any other PoE capable device without the need for running separate wires for power. This also allows the ability for a centralized battery backup for all these devices.

PRODUCT FEATURES

- Compact, Space Saving Package
- IEEE 802.3af Compliance
- Four 10/100BaseTX RJ-45 Ports (Data In)
- Four 10/100BaseTX RJ-45 PoE Ports (Data & Power Out)
- Unmanaged Operation
- Extended Environmental Specifications
 - -40°C to 85° Operating Temperature
- Automatic Detection of Connected PoE Devices
- Up to 0.8 Gb/s Maximum Throughput
- Full Wire Speed Communications
- Supports 15.4 Watts per port (13 Watts at the PD)
- Redundant Power Inputs (46-49 VDC)
- Power Fault Status LED
- LED PoE Status Indication
- Hardened Metal DIN-Rail Enclosure

PRODUCT OVERVIEW

Ideal for upgrading non-PoE network infrastructures with PoE capabilities, the N-TRON 100-POE4 Industrial PoE Mid-Span Injector is designed to solve the most demanding industrial communications requirements by providing high throughput and minimum downtime while also providing power to PoE capable devices over the existing Ethernet network.

The 100-POE4 provides four pairs of two RJ-45 10/100BaseTX copper ports. Each pair consists of one RJ-45 port that connects to an existing network, and one RJ-45 PoE capable port that can send data and, up to 15.4 watts of power to a PoE capable device. The data on all four pairs are isolated from each other allowing for ease in upgrading non-PoE network infrastructures.



The 100-POE4 automatically detects any PoE device that is connected and powers it accordingly. Auto-disconnect is another feature of this device. When a PoE fault is detected on a particular port the PoE feature is disabled on that port, allowing only data communications to pass, and thus reducing the risk of damaging costly equipment.

The 100-POE4 is an ideal candidate for providing data and power to wireless LAN access points, network cameras, VoIP, and other PoE capable devices. The product also keeps the network affordable by simplifying the need for costly electrical wiring and electrician expenses.

The 100-POE4 has extended operating environmental specifications to meet the harsh needs of the industrial environment. For cost savings and convenience the device can be DIN-Rail mounted alongside Ethernet I/O or other Industrial Equipment.

To increase reliability the 100-POE4 provides dual redundant power inputs. Dual LED's for each port is also another feature of this unit. These LED's indicate that power is being applied with a valid power source on the respective redundant power input. This allows for easy monitoring of the two redundant power inputs. A global power LED is also present at the top of the unit to indicate an overall valid power source and when a power bus fault occurs.

BENEFITS

PoE Industrial Network PSE

- Compact Size / Small Footprint
- Ability to Power Devices via LAN
- Eliminates need for Costly Electrical Wiring
- Extended Environmental Specifications
- Hardened Metal DIN-Rail Enclosure
- High Performance
- High MTBF >2M Hours
- ESD Protection Diodes on RJ-45 Ports
- Surge Protection Diodes on Power Inputs

Ease of Use

- Plug & Play Operation
- Unmanaged Operation
- Ideal for Network Expansion
- Auto-Detection of Connected PoE Devices
- Dual PoE Status LED's per port

Increased Performance

- Full Wire Speed Communications
- Auto-Disconnect of PoE Port if Fault is Detected

SPECIFICATIONS

Physical

Height:	3.50"	(8.89cm)
Width:	1.50"	(3.81 cm)
Depth Incl. DIN-Rail Mount:	4.22"	(10.72 cm)
Weight:	0.65 lbs.	(0.3 kg)
DIN-Rail:	35mm	

Electrical

Input Voltage:	46-49 VDC
Steady Input Current Under Full Load:	1.6 A@48V
Steady Input Current Under No Load:	30mA@48V
Inrush:	27Amp/1.5ms@48V

Environmental

Operating Temperature:	-40°C to 85°C
Storage Temperature:	-40°C to 85°C
Operating Humidity:	10% to 95% (Non Condensing)
Operating Altitude:	0 to 10,000 ft.

Reliability

MTBF:	>2 Million Hours
-------	------------------

Network Media

10BaseT:	>Cat3 Cable
100BaseTX:	>Cat5 Cable

Connectors

10/100BaseTX:	Eight (8) RJ-45 Copper Ports
---------------	---------------------------------

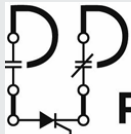
Recommended Wiring Clearance

Front:	2" (5.08 cm)
Top:	1" (2.54 cm)

Regulatory Approvals

FCC Title 47 Part 15 Class A, ICES-003- Class A, CE: EN61000-6-2,4, EN55011, EN61000-4-2,3,4,5,6 UL Listed (US and Canada) per ANSI/ISA-12.12.01-2000 Class I, Div. 2 Groups A,B,C,D,T4A, GOST-R Cert., RoHS Compliant, Submitted for type approval from ABS for Shipboard Applications,
Designed to comply with:
IEEE 1613 for Electric Utility Substations,
and NEMA TS1/TS2 for Traffic Control Equipment

Contact Information



PACIFIC PARTS & CONTROLS, INC.

6255 PRESCOTT COURT • CHINO, CA 91710

909-465-1174 • FAX 909-465-1178

www.pacificparts.com

Electrical Supply Distributor

Ordering Information

100-POE4	Four Pair 10/100BaseTX Ports Four POE Ports
NTPS-48-5	DIN-Rail Power Supply 48V @ 5 Amp