

Surge-Trap® Type 1 XT Series SPD

The Surge-Trap® Type 1 XT Series offers Advanced Technology. It utilizes large block 50kA Thermally Protected MOV's. With line or load side installation flexibility, this unit is a great fit from the service entrance all the way down to each distribution and/or branch panel.

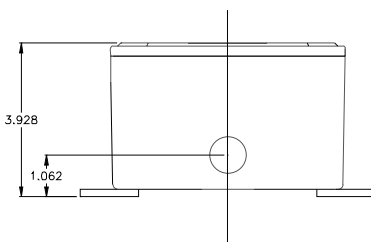
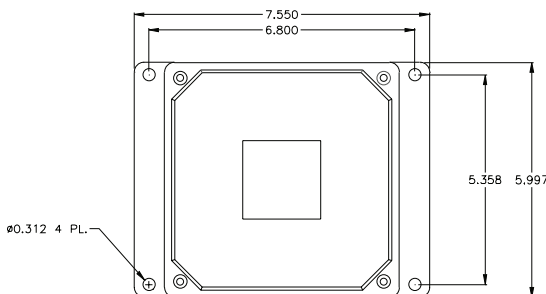
Features/Highlights:

- UL 1449 Third Edition Listed (Sept 2009)
- Type 1 SPD – All UL required OCP & safety coordination included inside
- Can be installed line-side or load-side of main disconnect
- 20kA Nominal discharge current
- 200kA SCCR (most models)
- UL 96A Lightning Protection Master Label compliant (@20kA In)
- NEMA 4X polycarbonate enclosure – UL 746C(f1) & UL 94-5VA
- TPMOV® Technology Inside
- All MOV suppression elements monitored
- Filtering - AC sinewave tracking filter with EMI/RFI filtering up to -50dB from 10khz to 100mhz
- Phase-loss monitoring (toggles LED and dry contacts)
- Ten-year Warranty

Applications:

- Service Entrance
- AC Distribution
- Power supplies
- Drive Protection
- Large Control Panels
- Telecommunications
- IT / Data centers

Dimensions and Weight



Weight: 5lbs (2.3kg)



Ratings:

- Surge** : 100kA per phase
: 200kA per phase
- Volts** : 120V to 600V
- SCCR** : 200kA SCCR (most models)
- Nominal discharge current**
: 20kA (most models)
- Operating & storage temp**
: -25°C to +60°C
- Enclosure**
: NEMA 4x

Approvals:

- UL 1449 Third Edition, cUL, UL 1283 R/C
- UL File: VZCA.E210793
- RoHS Compliant
- IEC 61643, CE
- Burn-In tested prior to shipment
- UL 96A lightning protection master label

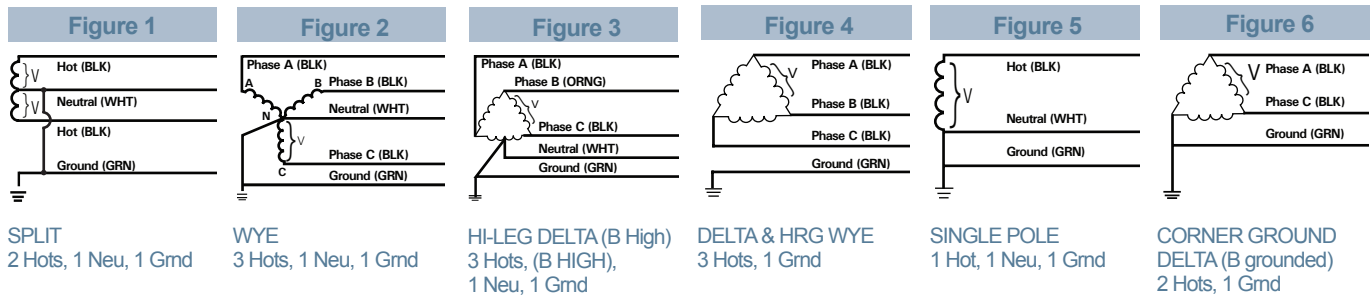


Surge-Trap® Type 1 XT Series SPD

Catalog Numbers - Ordering System

| STXT | System Voltage | S | Surge Rating | Enclosure | Options |
|----------------|---|---|--------------|-----------|-----------------------------------|
| STXT | Common System Configurations | | | | Blank |
| | 01 = 240/120V Split Phase - 1Φ 3W+Grnd (Fig 1) | | 100 | | A = Audible Alarms & Dry Contacts |
| | 02 = 208Y/120V Wye - 3Φ 4W+Grnd (Fig 2) | | 200 | | E = Remote Indicator (6ft cable) |
| | 03 = 240/120V High Leg Delta (B High) (Fig 3) | | 200 | | L = Deletes L-N protection |
| | 04 = 480Y/277V Wye - 3Φ 4W+Grnd (Fig 2) | | 200 | | G = Deletes L-G protection |
| | 05 = 480V Delta - 3Φ 3W+Grnd (Fig 4) & HRG Wye | | 200 | | N = Deletes N-G protection |
| | 08 = 600Y/347V Wye -3Φ 4W+Grnd (Fig 2) | | 200 | | R = Alternate lead length |
| | | | | | |
| | Other System Configurations Available | | | | |
| | 06 = 240V Delta - 3Φ 3W+Grnd (Fig 4) | | | | |
| | 07 = 380Y/220V Wye - 3Φ 4W+Grnd (Fig 2) | | | | |
| | 09 = 600V Delta - 3Φ 3W+Grnd (Fig 4) & HRG Wye | | | | |
| | 11 = 120V Single Phase (Fig 5) | | | | |
| | 12 = 240V Single Phase (Fig 5) - Not split phase | | | | |
| | 13 = 127V Single Phase (Fig 5) | | | | |
| | 14 = 300V Single Phase (Fig 5) | | | | |
| | 15 = 254/127V Split Phase - 1Φ 3W+Grnd (Fig 1) | | | | |
| | 16 = 277V Single Phase (Fig 5) | | | | |
| | 17 = 480V Single Phase (1 Hot, 1 Neu, 1 Grnd) (Fig 5) | | | | |
| | 18 = 480/277 2-Pole, (480/240V Split Phase) (Fig 1) | | | | |
| | 21 = 220Y/127V Wye - 3Φ 4W Grnd (Fig 2) | | | | |
| | 41 = 520Y/300V Wye- 3Φ 4W+Grnd (Fig 2) | | | | |
| | 42 = 415Y/240V Wye-3Φ 4W+Grnd (Fig 2) | | | | |
| | 43 = 400Y/230V Wye - 3Φ 4W+Grnd (Fig 2) | | | | |
| | 44 = 440Y/250V Wye - 3Φ 4W+Grnd (Fig 2) | | | | |
| | 51 = 480V B Corner Grnd Delta, 3Φ 3W+Grnd (Fig 6) | | | | |
| | 61 = 240V B Corner Grnd Delta, 3Φ 3W+Grnd (Fig 6) | | | | |
| | 91 = 600V B Corner Grnd Delta, 3Φ 3W+Grnd (Fig 6) | | | | |
| Example | STXP4S2004XA | | | | |
| STXP | 4 | S | 200 | 4X | A |

Wiring Diagrams



Performance Data

| Common North American Systems | | | UL 1449 THIRD Edition (Sept 2009) Test Data | | | | | | | |
|-------------------------------|---|----------------------------|---|----------|------|-----------|--------|------|-------|-----------|
| | | | Voltage Protection Ratings (VPR - 3kA) | | | | | | | |
| | | | L-N | L-G | N-G | L-L | Type | In | SCCR | MCOV |
| 01 | = | 240/120V Split Phase | 700 | 700 | 600 | 1000 | Type 1 | 20kA | 100kA | 150 |
| 02 | = | 208Y/120V 3Ø Wye | 700 | 700 | 600 | 1000 | Type 1 | 20kA | 200kA | 150 |
| 03 | = | 240Y/120V B High Leg Delta | 700/1200 | 700/1200 | 600 | 1000/2000 | Type 1 | 20kA | 200kA | 150 / 320 |
| 04 | = | 480Y/277V 3Ø Wye | 1200 | 1200 | 1200 | 2000 | Type 1 | 20kA | 200kA | 320 |
| 05 | = | 480V 3Ø Delta | - | 1800 | - | 2000 | Type 1 | 10kA | 200kA | 550 |
| 08 | = | 600Y/347V 3Ø Wye | 1500 | 1500 | 1500 | 2500 | Type 1 | 10kA | 200kA | 420 |

Available Accessories*

FMKTC = Flush mount kit.

RM = Remote monitor

*Consult factory for details.